



Information for the patient

Semaglutide 3mg/7mg/14mg tablets

semaglutide

This medicine is subject to additional monitoring. This will allow quick identification of new safety information. You can help by reporting any side effects you may get. See the end of section 4 for how to report side effects.

Read all of this leaflet carefully before you start taking this medicine because it contains important information for you.

- Keep this leaflet. You may need to read it again.
- If you have any further questions, ask your doctor, pharmacist or nurse.
- This medicine has been prescribed for you only. Do not pass it on to others. It may harm them, even if their signs of illness are the same as yours.
- If you get any side effects, talk to your doctor, pharmacist or nurse. This includes any possible side effects not listed in this leaflet. See section 4.

What is in this leaflet

1. What Semaglutide is and what it is used for
2. What you need to know before you take Semaglutide
3. How to take Semaglutide
4. Possible side effects
5. How to store Semaglutide
6. Contents of the pack and other information

1. What Semaglutide is and what it is used for

Semaglutide contains the active substance semaglutide. It is a medicine that is used to lower blood sugar levels.

Semaglutide is used to treat adults (aged 18 years and older) with type 2 diabetes when diet and exercise is not enough:

- on its own – when you cannot use metformin (another diabetes medicine) or
- with other medicines for diabetes – when the other medicines are not enough to control your blood sugar levels. These may be medicines you take by mouth or inject such as insulin.

It is important that you continue with your diet and exercise plan as agreed with your doctor, pharmacist or nurse.

2. What you need to know before you take Semaglutide

Do not take Semaglutide

- if you are allergic to semaglutide or any of the other ingredients of this medicine (listed in section 6).

Warnings and precautions

Talk to your doctor, pharmacist or nurse before taking Semaglutide.

Traceability

In order to improve the traceability of biological medicinal products, record the name and the lot number (included on the outer cartons and blister) of the medicine you are taking and provide this information when reporting any side effects.

General:

This medicine is not the same as insulin and you should not use it if:

- you have type 1 diabetes (your body does not produce any insulin)
- you develop diabetic ketoacidosis. This is a complication of diabetes with high blood sugar, breathing difficulty, confusion, excessive thirst, a sweet smell to the breath or a sweet or metallic taste in the mouth.

Stomach and gut problems

During treatment with this medicine, you may feel sick (nausea) or be sick (vomiting), or have diarrhoea. These side effects can cause dehydration

(loss of fluids). It is important that you drink enough fluids to prevent dehydration. This is especially important if you have kidney problems. Talk to your doctor if you have any questions or concerns.

Severe and on-going stomach pain which could be due to an inflamed pancreas

If you have severe and on-going pain in the stomach area – see a doctor straight away as this could be a sign of inflamed pancreas (acute pancreatitis).

Low blood sugar (hypoglycaemia)

Taking a sulfonylurea medicine or insulin with Semaglutide might increase the risk of getting low blood sugar (hypoglycaemia). See section 4 for the warning signs of low blood sugar levels.

Your doctor may ask you to test your blood sugar levels. This will help to decide if the dose of the sulfonylurea or insulin needs to be changed to reduce the risk of low blood sugar.

Diabetic eye disease (retinopathy)

Fast improvements in blood sugar control may lead to a temporary worsening of diabetic eye disease. If you have diabetic eye disease and get eye problems while taking this medicine, talk to your doctor.

Treatment response

If the treatment response with semaglutide is lower than expected, this may be due to low absorption caused by variability in absorption and low absolute bioavailability. You should follow the instructions given in section 3 for optimal effect of semaglutide.

Children and adolescents

This medicine is not recommended in children and adolescents aged under 18 years as the safety and efficacy in this age group have not been established.

Other medicines and Semaglutide

Tell your doctor or pharmacist if you are taking, have recently taken or might take any other medicines.

In particular, tell your doctor, pharmacist or nurse if you are using medicines containing any of the following:

- levothyroxine which is used for thyroid disease. This is because your doctor may need to check your thyroid levels if you are taking Semaglutide together with levothyroxine.
- warfarin or similar medicines taken by mouth to reduce blood clotting (oral anti-coagulants). You may need frequent blood tests to check how quickly your blood clots.
- If you are using insulin, your doctor will tell you how to reduce the dose of insulin and will recommend you to monitor your blood sugar more frequently, in order to avoid hyperglycaemia (high blood sugar) and diabetic ketoacidosis (a complication of diabetes that occurs when the body is unable to breakdown glucose because there is not enough insulin).

Pregnancy and breast-feeding

If you are pregnant or breast-feeding, think you may be pregnant or are planning to have a baby, ask your doctor for advice before taking this medicine.

This medicine should not be used during pregnancy, as it is not known if it affects your unborn baby. Therefore, use of contraception is recommended while taking this medicine. If you wish to become pregnant, discuss how to change your treatment with your doctor as you should stop using this medicine at least 2 months in advance. If you become pregnant while using this medicine, talk to your doctor straight away, as your treatment will need to be changed.

Do not use this medicine if you are breast-feeding, as it is unknown if it passes into breast milk.

Driving and using machines

If you use this medicine in combination with a sulfonylurea or insulin, low blood sugar (hypoglycaemia) may occur which may reduce your ability to concentrate. Do not drive or use machines if you get any signs of low blood sugar. See section 2, 'Warning and precautions' for information on increased risk of low blood sugar and section 4 for the warning signs of low blood sugar. Talk to your doctor for further information.

Semaglutide contains sodium

This medicine contains 23 mg sodium in each tablet. This is equivalent to 1% of the recommended maximum daily dietary intake of sodium for an adult.

3. How to take Semaglutide

Always take this medicine exactly as your doctor has told you. Check with your doctor or pharmacist if you are not sure.

How much to take

- The starting dose is one 3 mg tablet once a day for one month.

- After one month, your doctor will increase your dose to 7 mg once a day.
 - Your doctor may increase your dose to 14 mg once a day if your blood sugar is not controlled well enough with a dose of 7 mg once a day.
- Your doctor will prescribe the strength that is right for you. Do not change your dose unless your doctor has told you so. It is not recommended to take two 7 mg tablets to get the effect of one 14 mg tablet, as this has not been studied.

Taking this medicine

- Take your Semaglutide tablet on an empty stomach at any time of the day.
- Swallow your Semaglutide tablet whole with a sip of water (up to 120 ml). Do not split, crush or chew the tablet, as it is not known if it affects absorption of semaglutide.
- After taking your Semaglutide tablet wait at least 30 minutes before having your first meal or drink of the day or taking other oral medicines. Waiting less than 30 minutes lowers the absorption of semaglutide.

If you take more Semaglutide than you should

If you take more Semaglutide than you should, talk to your doctor straight away. You may get side effects such as feeling sick (nausea).

If you forget to take Semaglutide

If you forget to take a dose, skip the missed dose and just take your normal dose the next day.

If you stop taking Semaglutide

Do not stop using this medicine without talking to your doctor. If you stop using it, your blood sugar levels may increase.

If you have any further questions on the use of this medicine, ask your doctor, pharmacist or nurse.

4. Possible side effects

Like all medicines, this medicine can cause side effects, although not everybody gets them.

Serious side effects

Common (may affect up to 1 in 10 people)

- complications of diabetic eye disease (retinopathy). You should tell your doctor if you get eye problems, such as changes in vision, during treatment with this medicine.

Rare (may affect up to 1 in 1,000 people)

- serious allergic reactions (anaphylactic reactions). You must get immediate medical help and inform your doctor straight away if you get symptoms such as breathing problems, swelling of face and throat, wheezing, fast heartbeat, pale and cold skin, feeling dizzy or weak.
- inflamed pancreas (acute pancreatitis) which could cause severe pain in the stomach and back which does not go away. You should see a doctor immediately if you experience such symptoms.

Other side effects

Very common (may affect more than 1 in 10 people)

- feeling sick (nausea) – this usually goes away over time
- diarrhoea – this usually goes away over time
- low blood sugar (hypoglycaemia) when this medicine is used with medicines that contain a sulfonylurea or insulin. Your doctor may reduce your dose of these medicines before you start using this medicine.

The warning signs of low blood sugar may come on suddenly. They can include: cold sweat, cool pale skin, headache, fast heartbeat, feeling sick (nausea) or very hungry, changes in vision, feeling sleepy or weak, feeling nervous, anxious or confused, difficulty concentrating or shaking. Your doctor will tell you how to treat low blood sugar and what to do if you notice these warning signs.

Common (may affect up to 1 in 10 people)

- low blood sugar (hypoglycaemia) when this medicine is used with oral diabetes medicine other than sulfonylurea or insulin
- being sick (vomiting)
- upset stomach or indigestion
- inflamed stomach ('gastritis') – the signs include stomach ache, feeling sick (nausea) or being sick (vomiting)
- reflux or heartburn – also called 'gastro-esophageal reflux disease'
- stomach pain
- bloating of the stomach
- constipation
- tiredness

- less appetite
- gas (flatulence)
- increase of pancreatic enzymes (such as lipase and amylase) shown in blood tests.

Uncommon (may affect up to 1 in 100 people)

- weight loss
- gallstones
- burping
- fast pulse.

Reporting of side effects

If you get any side effects, talk to your doctor, pharmacist or nurse. This includes any possible side effects not listed in this leaflet. By reporting side effects you can help provide more information on the safety of this medicine.

5. How to store Semaglutide

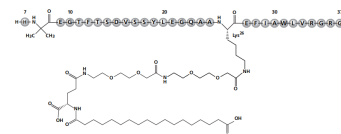
Keep this medicine out of the sight and reach of children.

Do not use this medicine after the expiry date which is stated on the blister and carton after 'EXP'. The expiry date refers to the last day of that month. Store in the original package in order to protect from light and moisture. This medicine does not require any special temperature storage conditions. Do not throw away any medicines via wastewater or household waste. Ask your pharmacist how to throw away medicines you no longer use. These measures will help protect the environment.

6. Contents of the pack and other information What Semaglutide contains

The active substance is semaglutide. The molecular formula is C₁₈₇H₂₉₁N₄O₅₉ and the molecular weight is 4113.58 g/mol.

Structural formula:



Semaglutide is a white to almost white hygroscopic powder.

- Each tablet contains 3, 7 or 14 mg semaglutide.
- The other ingredients are salcaprozate sodium, povidone K90, cellulose microcrystalline, magnesium stearate.

What Semaglutide looks like and contents of the pack

Semaglutide 3 mg tablets are light yellow and oval shaped. debossed with "TLPH" on one side.
Semaglutide 7 mg tablets are light yellow and oval shaped. debossed with "TLPH" on one side.
Semaglutide 14 mg tablets are light yellow and oval shaped. debossed with "TLPH" on one side.

Semaglutide tablets are available 30 count in bottle with a child-resistant closure or in alu/alu blister cards in pack sizes of 30 tablets. Not all pack sizes may be marketed in your country.

Marketing Authorisation Holder

Tongmeng(Lao) Pharmaceutical and Food Co., Ltd
Rd13 South,31km,Ban Naphasuk,Saithany District
Vientiane
Lao PDR

Manufacturer

Tongmeng(Lao) Pharmaceutical and Food Co., Ltd
Rd13 South,31km,Ban Naphasuk,Saithany District
Vientiane
Lao PDR

For any information about this medicine, please contact the local representative of the Marketing

